



Wheatstone Project LNG Plant

Tony Hey

Bechtel Oil, Gas and Chemicals, Inc.

June 22, 2010

Agenda



- Bechtel Introduction
- Site Location
- Wheatstone Project LNG Plant FEED Schedule
- LNG Plant Scope and Quantities
- Execution Strategy and Modularization
- Procurement and Sub Contracts
- Project Connect – Register your Interest
- Summary

Bechtel Introduction



Bechtel Perth office

- Tony Hey Manager Government & Public Affairs
- Fiona Connor Sub Contracts & Procurement
- Chris Walker Permit Coordinator
- Bob Lamplough Employee Relations Manager



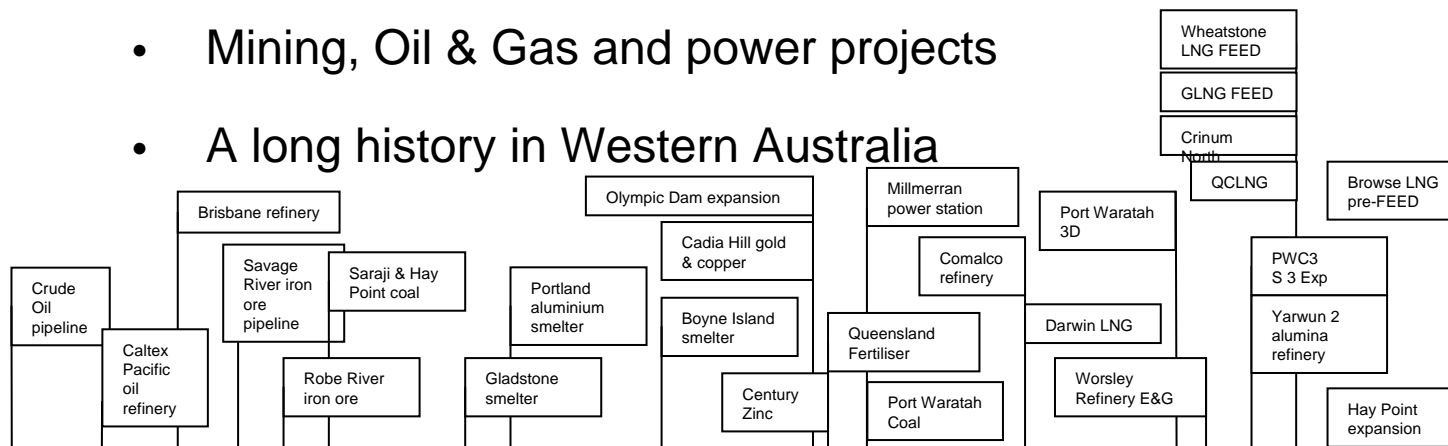
Bechtel Houston office

250 people

Bechtel Australian Experience



- Over 55 years Australian experience
- Mining, Oil & Gas and power projects
- A long history in Western Australia



1950s

1960s

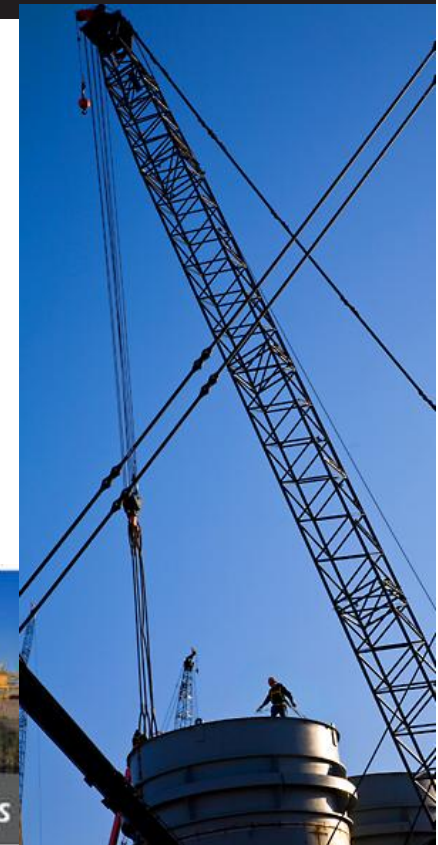
1970s

1980s

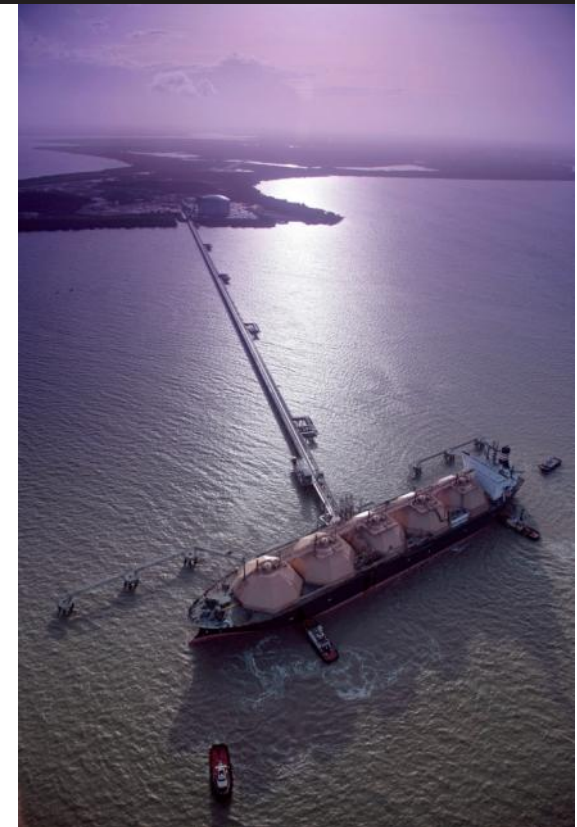
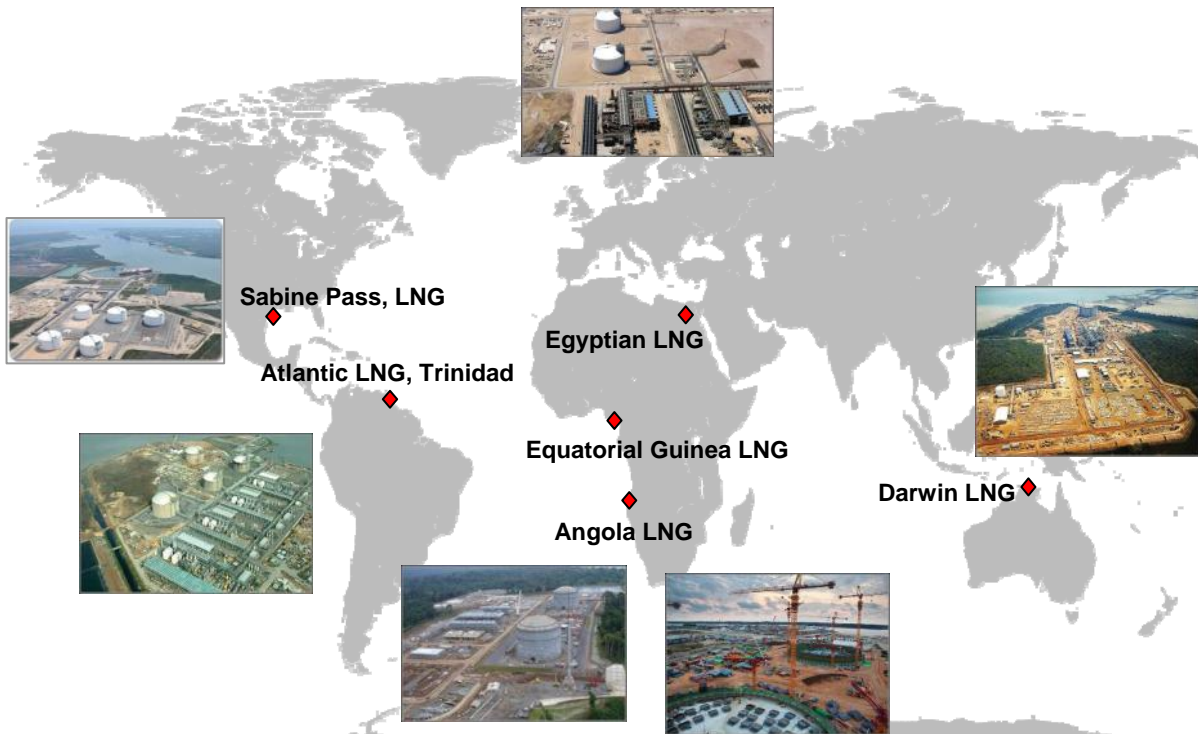
1990s

2000s

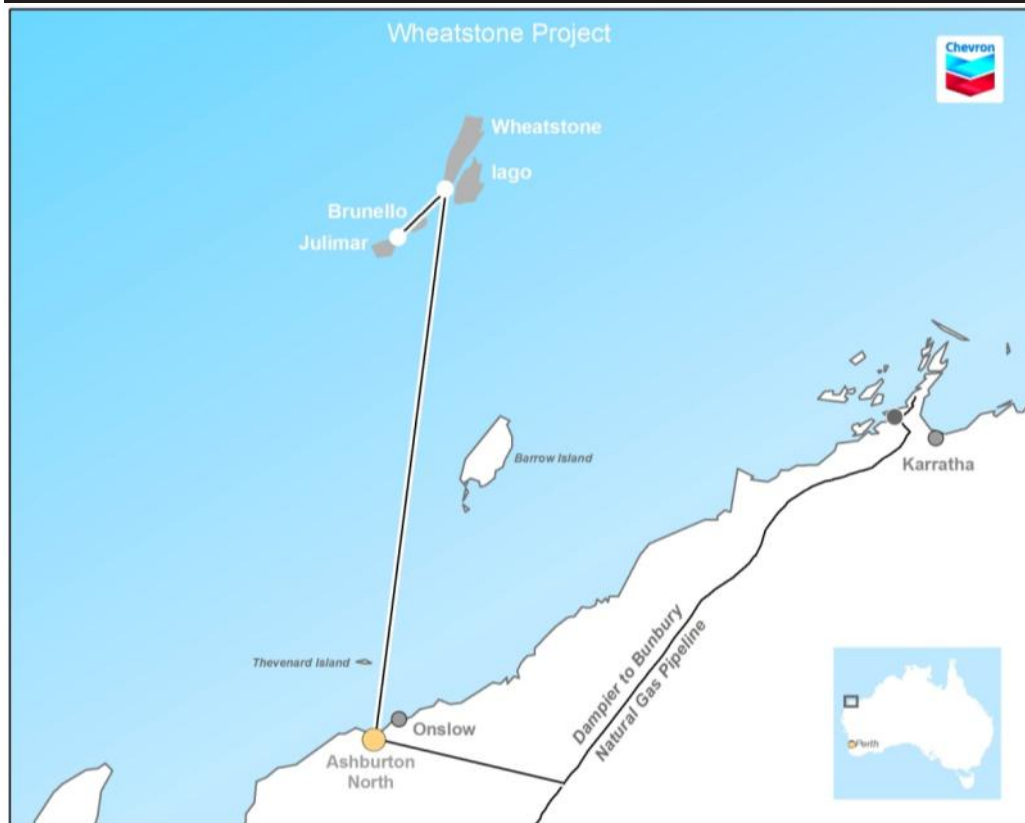
2010s



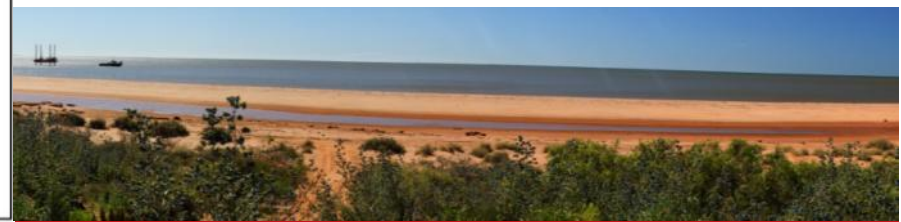
Bechtel Global LNG Experience



Site Location



- 225km from Wheatstone field
- 210km from Karratha (direct)
- 330km from Karratha (road)



Site Location



- 12km from Onslow (direct)
- 32km from Onslow (new road)
- Construction camp to be 20km from Onslow



LNG Plant Major Scope Components



Dredging shipping channel

LNG tanks

Condensate storage tanks

Slugcatcher

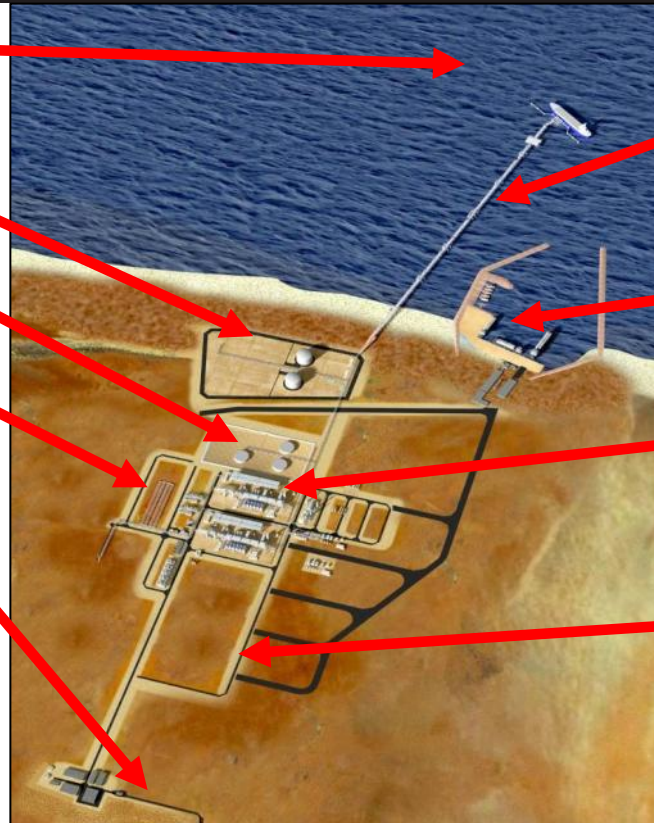
Domestic gas pipeline

Product loading facility (PLF) = jetty

Material off loading facility (MOF) = wharf

LNG trains and DOM Gas plant

Infrastructure buildings and roads



Quantities - Indicative



- Structural Steel 41,000 tonnes
- Bulk Pipe 150,000 m
- Pipe Spools 14,000 no.
- Reinforcing Steel 10,000 tonnes
- Prefabricated Electrical Substations 12 each



Execution Strategy



- Mix of sub contracts and self perform work
- Optimal balance between these two is to be determined during FEED phase
- Execution designed to create reliable outcomes and best value to Chevron

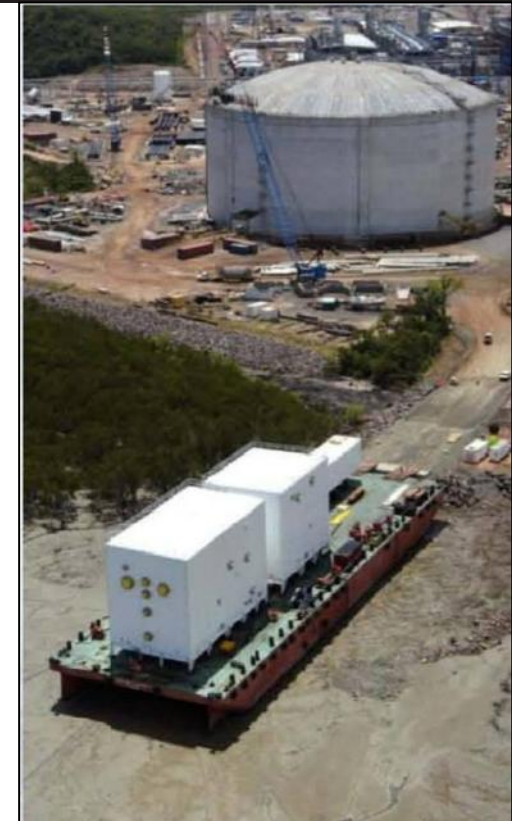


Modularization



Modules identified in FEED

- 161 modules
- 91,000 tonnes
- Heaviest module: 3,800 tonnes
- Longest: 85m
- Widest: 34m
- Tallest: 31m



Procurement and Sub-Contracts to Date



- ICNWA engaged December 2009
- ProjectConnect launched May 2010
- Prequalification process underway—questionnaires and selection
- 22 major sub contract packages released for pricing to prequalified bidders to date
- 21 major purchase orders packages released for initial pricing to approved suppliers to date



REGISTER FOR SUPPLY OPPORTUNITIES

Current Projects Available for Whetstone LNG Project

Click the link project of interest below:

- Whetstone Project - Whetstone Platform Procurement
- Whetstone Project - Onshore LNG Plant Procurement
- Whetstone Project - Onshore LNG Plant Subcontracts

Project Name - Whetstone Project - Onshore LNG Plant Subcontracts

Description - The Client requires Whetstone LNG and associated gas plant P&ID work to be awarded to Bechtel Oil, Gas and Chemicals, Inc. The project is a greenfield development of a gas field in the West Coast of Western Australia. The project will consist of two specified natural gas (SNG) production trains, associated gas (SAG) processing plant, and condensate processing facilities, with associated offshore product loading facility (PLF), subsea offloading facility (SOF) and other infrastructure.

The feed gas will be coming from gas fields located off the West Coast of Western Australia in the Carnarvon Basin. Condensate will also be produced. The gas supply will be processed on the Processing Platform (PP) and delivered to landfill at the laboratory North site as a subsea pipeline.

The Whetstone Project entered the front-end engineering and design phase in July 2009 and expects to make a final investment decision in 2011. Chevron is the operator and holds an approximate 75 percent interest in the project.

Goods & Services required for this project:

*Users must have the appropriate permissions to view additional information on packages. To view information click on the RFP icon. If required you can download the RFP by clicking Print.

RFP icon provides additional information on packages. To view information click on the RFP icon. If required you can download the RFP by clicking Print.

Project Packages	SEARCH PACKAGES	EST. PACKAGE CLASS	EST. PACKAGE	COMPLETION OF PACKAGE	REQUEST SUPPLIES
WCT-ANET-0001	Construction Power Generation	14-00-001	14-00-001	14-00-001	14-00-001
WCT-CY10-0001	Ship Survey Services	12-21-101	12-21-101	12-21-101	12-21-101
WCT-EP10-0001	Valves (Components)	14-21-101	14-21-101	14-21-101	14-21-101
WCT-CY10-0001	Flow Testing and Flow Testimony	14-70-101	14-70-101	14-70-101	14-70-101
WCT-SEC-0001	Security Services	14-00-101	14-00-101	14-00-101	14-00-101
WCT-SEC-0001	Air Services	14-00-101	14-00-101	14-00-101	14-00-101
WCT-SEC-0001	Training	14-00-101	14-00-101	14-00-101	14-00-101
WCT-SEC-0001	Transport & Temporary Housing	14-00-101	14-00-101	14-00-101	14-00-101
WCT-CY10-0001	Construction Jobsite Welfare Buildings and Utilities	14-00-101	14-00-101	14-00-101	14-00-101
WCT-SEC-0001	Security Services	14-00-101	14-00-101	14-00-101	14-00-101
WCT-SEC-0001	Security Services	14-00-101	14-00-101	14-00-101	14-00-101

Procurement Packages - Indicative



Equipment	Material
Packaged and Prefabricated Substations	Bulk Pipe
Compressors	Platform & Ladder Steel
Heat Exchangers	Reinforcing Steel
Generators	Structural Steel
Pumps	Line Pipe
Vessels	Insulation
Valves	Cable
Potable Water Treatment System	Electrical Cable Tray

Sub-contract Packages - Indicative



Design & Construct	Construct Only	Services
Marine Material Offloading Facility	Site Preparation	Construction Village Operations & Catering
Product Loading Facilities	Permanent & Temporary Fencing	Medical Services
Marine Breakwater	145kV Cable & Hardware Supply & Installation	Air Services
Construction Jobsite Modular Building & Utilities	Concrete Batch Plant & Aggregate Supply	Security Services
Construction Village Buildings	Piling Installation	Bus Services
LNG Storage Tanks	Pipe Rack Module Fabrication	Non-destructive Examination
Condensate Storage Tanks	Marine Dredging	Waste Management Services

Procurement and Contracts – Going Forward



- Prequalification process – ongoing
- Release pricing enquiries for further estimating from July – August 2010
- Final submission of prices from suppliers and sub contractors to support FEED estimate August – October 2010



Summary



- Register your interest for Wheatstone Project Onshore LNG Plant: www.projectconnect.com.au
- Follow up your registration with:
 - Tony Hey Manager Government and Public Affairs
 - Fiona Connor Sub Contracts and Procurement Rep
 - Perth Office 08 6311 4658
 - Level 18, 152-158 St Georges Tce Perth WA 6000



Register Your Interest



- Register your interest on Wheatstone Project LNG Plant – ICNWA and ProjectConnect
- Lists of major procurement and sub contract packages
- Scope descriptions posted progressively on ProjectConnect
- Register where you have capability
- Prequalification process handled by the Project



Way Forward



- Contact ICNWA and register your interest on ProjectConnect
- Chevron will provide Full, Fair & Reasonable opportunity - bids need to be competitive
- Keep monitoring ProjectConnect for opportunities
- Thank you for attending